

Foundational Public Health Services

Board of Health Presentation – December 1, 2016

Linda J. Graham, Policy Analyst

Administration Division



Background

- **Since 2000:**
 - Public health \$ decreased 40%
 - Population grew by more than 1 million
- **By 2025: another 2 million residents**
- **Increasing public health threats**
- **Funding and services vary significantly across the state**

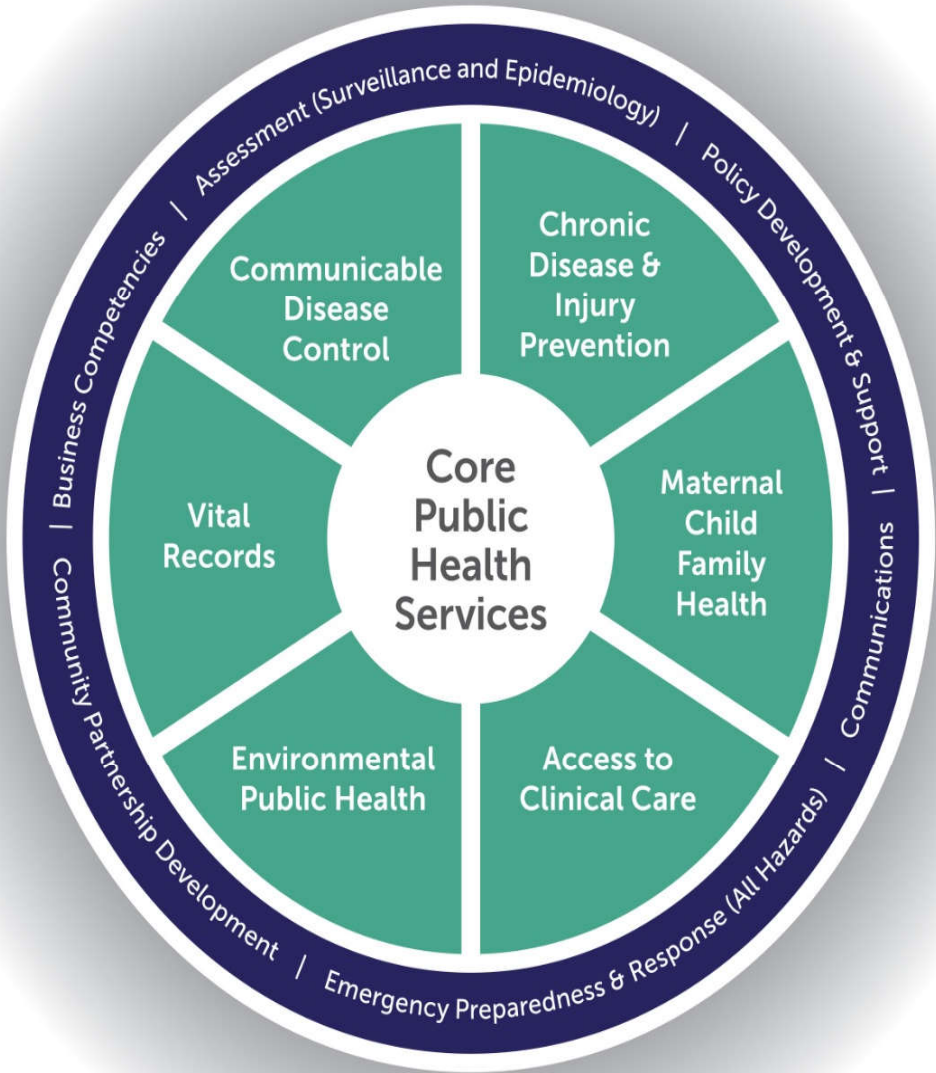
LONG-TERM STRATEGY FOR PH FUNDING

FPHS Goals

- Define a set of foundational public health services
- Estimate the cost and identify gap
- Identify and secure sustainable funding

FOUNDATIONAL PUBLIC HEALTH IN WASHINGTON STATE

Ensuring all residents can depend on a core set of services which only governmental public health can provide.



PROGRAMS

A basic set of programs that are accessible in every community across the state.

CAPABILITIES

Capabilities & infrastructure to support foundational programming.

MEETING LOCAL NEEDS

In addition to these core programs and capabilities, there are other services implemented to meet community-driven needs.

Foundational	Local Needs
Providing tuberculosis treatment to individuals to prevent the spread of disease.	
	Providing WIC services in communities where no other agencies provide the service.
Promoting immunizations to prevent spread of disease.	Providing immunization shots in a community where access to immunization providers is limited.

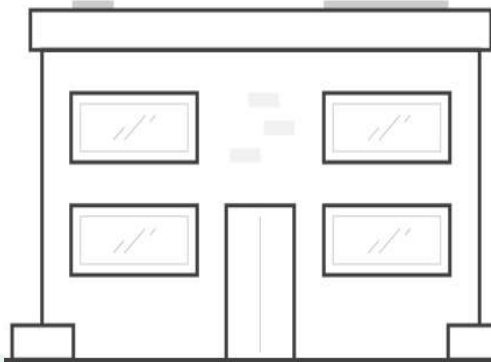
Cost of FPHS

Cost of FPHS

– Current State \$

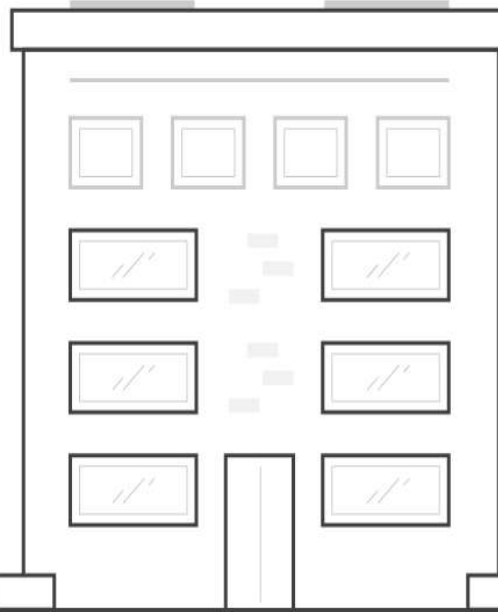
\$100 million shortfall

\$30.08 per capita



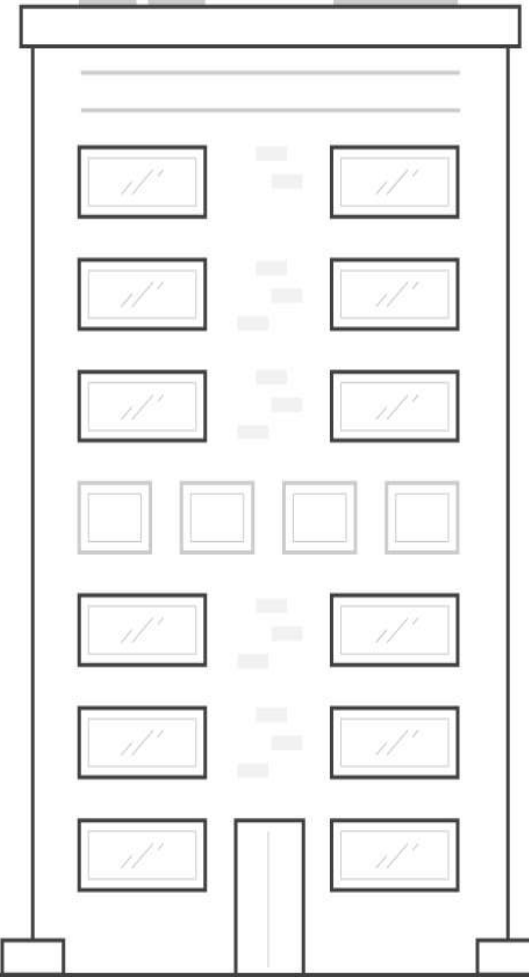
Washington

\$54.35 per capita



Idaho

\$89.75 per capita



Wyoming

Administration Division



Seeking Down Payment

Legislative ask for 2017/2018 biennial budget:

- **\$25M/year to LHJs** for communicable disease and chronic disease prevention
- **\$3M/year to DOH** to improve capacity for disease monitoring and investigations, and expand laboratory capacity
- **\$2M/year for service delivery pilot programs** to explore potential for LHJs to share some services

Other Work During Biennium

- Refining formula for distribution to LHJs
- Exploring long-term funding mechanisms
- Determining how funding is allocated across all foundational services
- Developing operational guidelines/standards for all FPHS
- Developing accountability framework



publichealthisessential.org

Administration Division

